

HONORING OUR LEGACY

TO INSPIRE FOR THE FUTURE



LEARNERS
INSPIRING
LEARNERS

TO BE
INQUISITIVE
IN LIFE

PRINCIPLED
IN CHARACTER

AND
BOLD
IN VISION



American School of Brasilia
Learners Inspiring Learners





STRATEGIC PLANNING PROCESS

In **2019**, our school embarked on a design process that included input from all stakeholder groups. At the end of this process, our Board of Directors approved our new strategic goals. Shortly after this, the world turned its attention to a crisis, the global Covid-19 pandemic. Our focus became how to provide the highest-quality learning to our students while continuing to achieve our strategic goals.

March of 2022 brought us an opportunity to revisit our strategic goals as part of **Community Planning Day**. On this day, we listened to feedback and creative insights from all stakeholder groups to help us create priorities for the best path forward for our school. After this Community Planning Day, we followed up with a community survey in April of 2022, to which our community responded with more than 650 submissions.

This was an important moment for our school. The feedback from our community directly contributed to us developing a fully articulated and detailed strategic plan that lays the pathway to achieving our ambitious vision and goals.



At EAB, we are anchored by our mission: **learners inspiring learners to be inquisitive in life, principled in character, and bold in vision.**

In a year-long process that included extensive community input, consultation, and collaboration with our leadership team and board of directors, we developed ambitious **strategic goals** aligned with the four sections of our mission. Our strategic plan is the pathway to achieving these ambitious goals as we continue to accelerate learning for our students.

EAB STRATEGIC GOALS

Empowering our community to positively impact the world



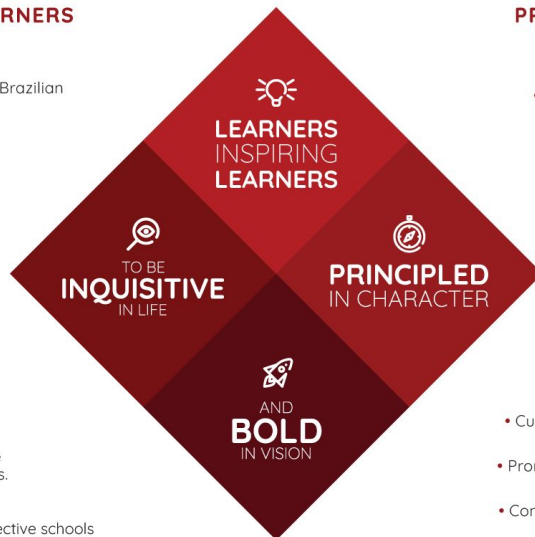
LEARNERS INSPIRING LEARNERS

- Empower students to be actively engaged learners and leaders.
- Equip students to excel completing the US, Brazilian and/or IB curricula through differentiated approaches to learning.
- Attract, retain, and develop the very best educators and staff.
- Enable excellent teaching grounded in best practices and an aligned curriculum.



INQUISITIVE IN LIFE

- Develop independent, inquiring, critical thinkers for an ever-evolving world.
- Provide opportunities for our learners to be curious and explore on and off EAB's campus.
- Prepare students for life beyond school.
- Strengthen partnerships with other highly effective schools and institutions around the world.



PRINCIPLED IN CHARACTER



- Clearly demonstrate EAB's mission and vision in our words and actions.
- Ensure student and staff physical, mental, social, and emotional well-being.
- Build an inclusive community that celebrates our diversity.
- Honor individuals' perspectives while embracing the shared human experience.

BOLD IN VISION



- Ensure our community knows who we are, what we value, and our plans for the future.
- Cultivate the courage and skills in students to advocate for themselves and others.
- Promote innovation, entrepreneurship, and the practical application of learning.
- Continuously improve facilities as a vehicle for learning, collaboration, and sustainability.



WHAT INFORMS STRATEGIC PLANNING?



665

Community
survey
responses



150+

Meetings with
individual
teachers



62

Community
Planning Day
member
feedback



Council of
International
Schools

Accreditation Team
recommendations



120+

Classroom
visits



Board of
Directors

Collaborative
long-term
strategy



STRATEGIC PRIORITIES 2022- 2028



Academic
Excellence



Innovative
Thinking



Belonging



HOW WILL WE ADVANCE



ACADEMIC EXCELLENCE?



At EAB, academic excellence means that all students reach their full potential as learners. Our focus is on ensuring that we are differentiating for all students, embracing concept-based learning, and ensuring that our students are prepared for life beyond EAB through an experience-based curriculum.

During the next five years, we will focus on these three areas related to academic excellence:

1. We will focus on pedagogical structures that guide students to deeper [learning that transfers](#).



2. We will support [high-quality instruction](#) for each student in every classroom by providing structures and support for differentiation.



3. We will focus on [experiential learning](#) as a key component of a student's academic experience by increasing access to local and global opportunities like service learning, off-campus trips, and internships.



*Click on the links above to discover more about any of the areas related to academic excellence.



HOW WILL WE ADVANCE



INNOVATIVE THINKING?



At EAB, innovative thinking means being bold in vision. It means that we act courageously to make our dreams for our students a reality. We focus on developing individualized pathways for students to learn, and designing spaces where our students will engage in this learning.

During the next five years, we will focus on these three areas related to innovative thinking:

1. We will begin construction of a **new arts facility** to inspire students to explore the arts, design concepts, and innovative thinking in a world-class facility.



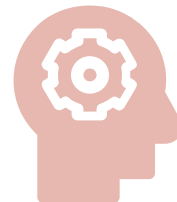
2. We will design innovative programs using a **personalized approach** that allow students to explore pathways related to their passions, interests, and unique needs as learners.



3. We will commit to continuous improvement of our campus and **learning spaces** to nurture and inspire students in innovative ways.



*Click on the links above to discover more about any of the areas related to innovative thinking.



HOW WILL WE ADVANCE



BELONGING?



At EAB, we know that students learn best and develop as global citizens when everyone feels a sense of belonging. Therefore, our focus is on helping students develop as social and emotional learners, strengthening our commitment to diversity and inclusion, and working to connect our community.

During the next five years, we will focus on these three areas related to belonging::

1. We commit to deepening our students' social and emotional competencies, and those competencies' impact on belonging and academic excellence.



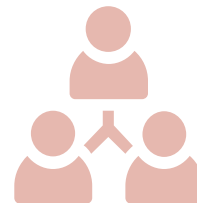
2. We will continue our work on global citizenship, diversity, and inclusion to ensure that this focus has permanence at EAB and that every student feels every student feels valued, included, and sees themselves as a global citizen..



3. We will work to connect our community post-pandemic and strengthen our EAB culture by focusing on our shared values.



*Click on the links above to discover more about any of the areas related to belonging.



EAB STRATEGIC PLANNING



American School of Brasilia
Learners Inspiring Learners

